



Brochure  
FDM

# Stratasys

## F370

Reliable. Repeatable. Exceptional.





# Precision 3D printing.

More reliable, more affordable, more productive rapid prototyping and manufacturing than ever before.



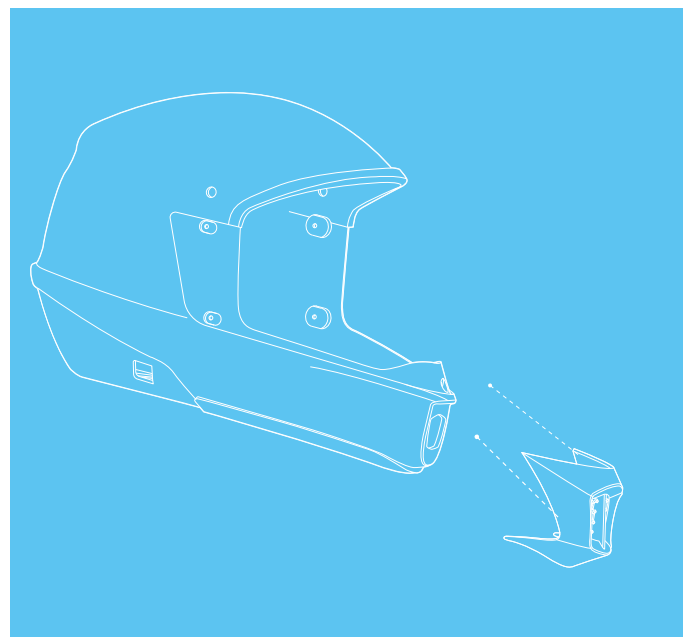
## More speed. More productivity.

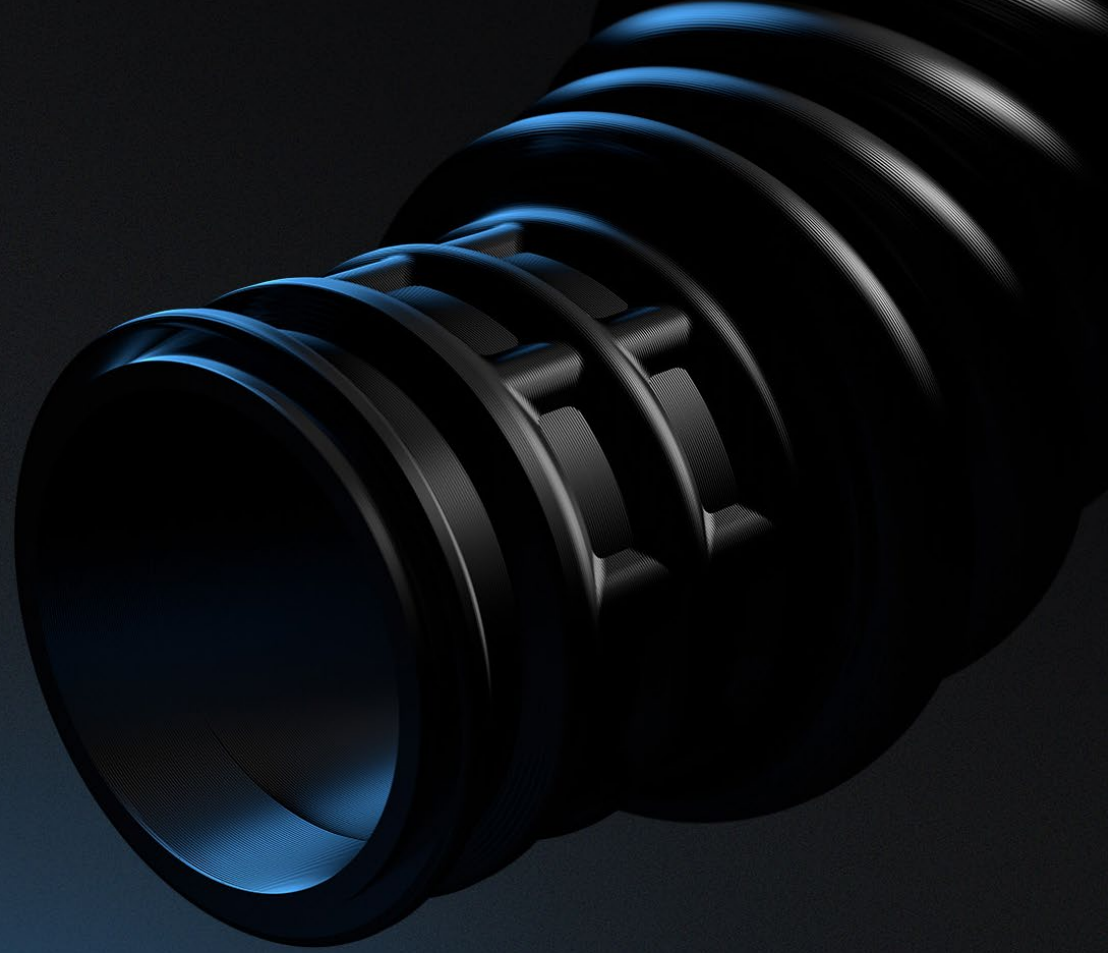
F370 3D printers give designers, engineers and educators access to affordable, industrial-grade 3D printing. Work faster through concept iterations and component verification. Make jigs, fixtures and manufacturing tools faster, with strong, stiff materials. Increase productivity and reach your goals sooner with repeatable results.

## Smother workflow. Greater accuracy.

F370 3D printers are designed for supreme ease of use and a more streamlined workflow, operating seamlessly with GrabCAD Print™ software. Execute complete control over native features such as surfaces, holes, and bodies. You can also apply varying levels of strength to different regions of the file, resulting in optimized FDM parts.

The upgraded version of the standard software, GrabCAD Print Pro™, is inclusive of advanced features that boost traceability and repeatability while decreasing overall costs.





#### **Elastomer**

Print large, complex elastomer parts with the F370™ printer.



#### **More choices. More possibilities.**

Work with a wide range of materials including carbon fiber, ABS, and elastomer. Achieve complex geometries and interlocking components with our unique soluble support material. However intricate the part, the soluble support dissolves to leave a pristine finish, requiring no hands-on removal.

#### **30 years of expertise. 100,000 hours of testing.**

For companies and schools new to 3D printing and established users alike, Stratasys F370 3D printers are the game-changing choice, with the highest levels of plug-and-print reliability and repeatable accuracy.





## Want to know more?

View the full specifications of the F370 Series below or contact us for a recommendation on the right system for you at [Stratasys.com](https://www.stratasys.com).

Product Specifications					
<b>System Size and Weight</b>	1,626 x 864 x 711 mm (64 x 34 x 28 in.), 227 kg (500 lbs) with consumables				
<b>Noise Specification</b>	46 dB maximum during build, 35 dB when idle				
<b>Layer Thickness</b>		0.330mm (0.013 in.)	0.254mm (0.010 in.)	0.178mm (0.007 in.)	0.127mm (0.005 in.) <sup>1</sup>
	PLA	○	●	○	○
	ABS-M30	●	●	●	●
	ABS-CF10	●	●	●	○
	ASA	●	●	●	●
	PC-ABS	●	●	●	●
	ABS-ESD7	○	●	●	○
	Diran 410MF07	●	●	●	○
FDM TPU 92A	○	●	●	○	
<b>Accuracy<sup>1</sup></b>	Parts are produced within an accuracy of +/- .200 mm (.008 in), or +/- .002 mm/mm (.002 in/in), whichever is greater.				
<b>Network Connectivity</b>	Wired: TCP/IP protocols at 100 Mbps minimum 100 base T, Ethernet protocol, RJ45 connector Wireless-ready: IEEE 802.11n, g, or b; Authentication: WPA2-PSK, 802.1x EAP; Encryption: CCMP, TKIP				
<b>System Requirements</b>	Windows 7, 8, 8.1 and 10 (64 bit only) with a minimum of 4GB RAM (8 GB or more recommended)				
<b>Operating Environment</b>	Operating: Temperature: 59 – 86 °F (15 – 30 °C), Humidity: 30 – 70% RH Storage: Temperature: 32 – 95 °F (0 – 35 °C), Humidity: 20 – 90% RH				
<b>Power Requirements</b>	100–132V/15A or 200 – 240V/7A. 50/60 Hz				
<b>Regulatory Compliance</b>	CE (low-voltage and EMC directive), FCC, EAC, cTUVus, FCC, KC, RoHs, WEEE, Reach				

<sup>1</sup>Accuracy is geometry-dependent. Achievable accuracy specification derived from statistical data at 95% dimensional yield. Z part accuracy includes an additional tolerance of -0.000/+slice height.



## F370

<b>Available material</b>	PLA <sup>2</sup> , ABS-ESD7, ABS-M30, ABS-CF10, ASA, Diran 410MF07 <sup>2</sup> , FDM TPU 92A, PC-ABS, QSR Support material
<b>Build tray dimension</b>	355 x 254 x 355 mm (14 x 10 x 14 in.)
<b>Material Bays</b>	4 total 2 model / 2 support
<b>Software</b>	GrabCAD Print, GrabCAD Print Pro <sup>3</sup> Insight™

2. PLA does not utilize soluble support material. The supports are made of breakaway PLA.

3. GrabCAD Print Pro is available on a subscription basis.

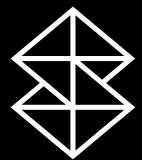
### Stratasys Headquarters

7665 Commerce Way,  
Eden Prairie, MN 55344  
+1 800 801 6491 (US Toll Free)  
+1 952 937-3000 (Intl)  
+1 952 937-0070 (Fax)

1 Holtzman St., Science Park,  
PO Box 2496  
Rehovot 76124, Israel  
+972 74 745 4000  
+972 74 745 5000 (Fax)

[stratasys.com](https://www.stratasys.com)

ISO 9001:2015 Certified



**Brochure**  
**FDM**

© 2024 Stratasys. All rights reserved. Stratasys, the Stratasys Signet logo, F370, and FDM are registered trademarks of Stratasys Inc. ABS-M30, FDM TPU 92A, Diran 410MF07, ABS-ESD7, GrabCAD Print, Insight, and GrabCAD Print Pro are trademarks of Stratasys, Inc. All other trademarks are the property of their respective owners, and Stratasys assumes no responsibility with regard to the selection, performance, or use of these non-Stratasys products. Product specifications subject to change without notice. BR\_FDM\_F370\_0324a